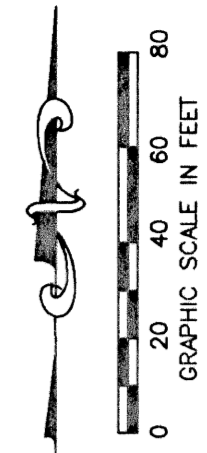


# JOURNEY'S END PLAT TWO

0697-006

58

PART OF SMITH DAIRY EAST P.U.D.  
 BEING A PORTION OF SECTION 3, TOWNSHIP 45 SOUTH, RANGE 42 EAST  
 TOGETHER WITH A REPLAT OF A PORTION OF BLOCK 39,  
 PALM BEACH FARMS COMPANY, PLAT NO. 3,  
 PLAT BOOK 2, PAGES 45 THROUGH 54  
 SITUATE IN SECTION 3, TOWNSHIP 45 SOUTH, RANGE 42 EAST  
 PALM BEACH COUNTY, FLORIDA  
 FEBRUARY, 1999 SHEET 7 OF 12



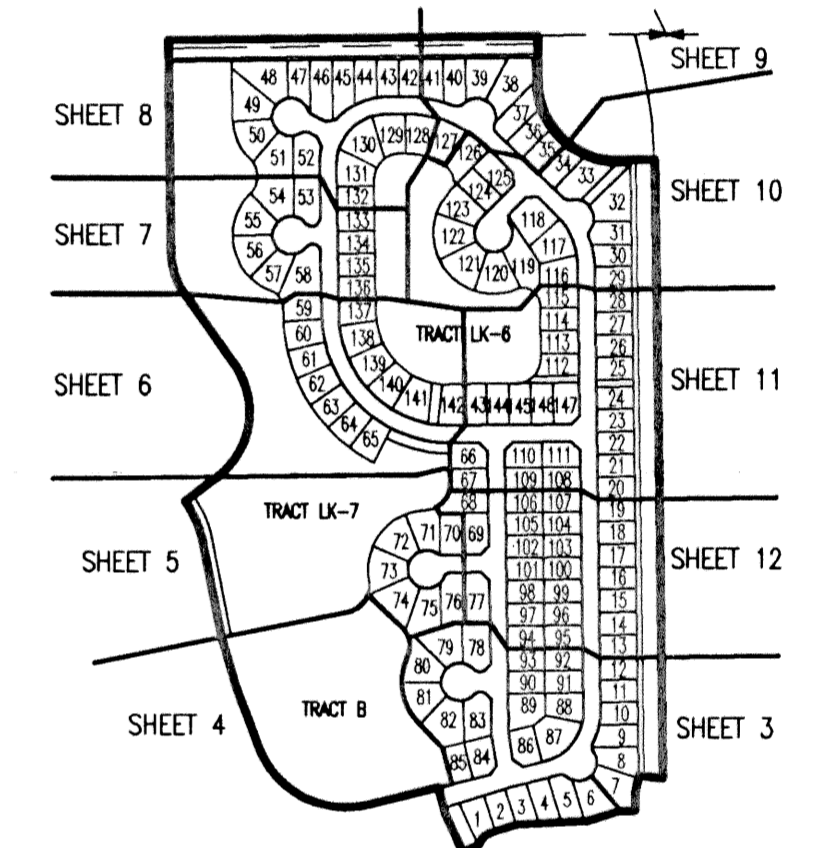
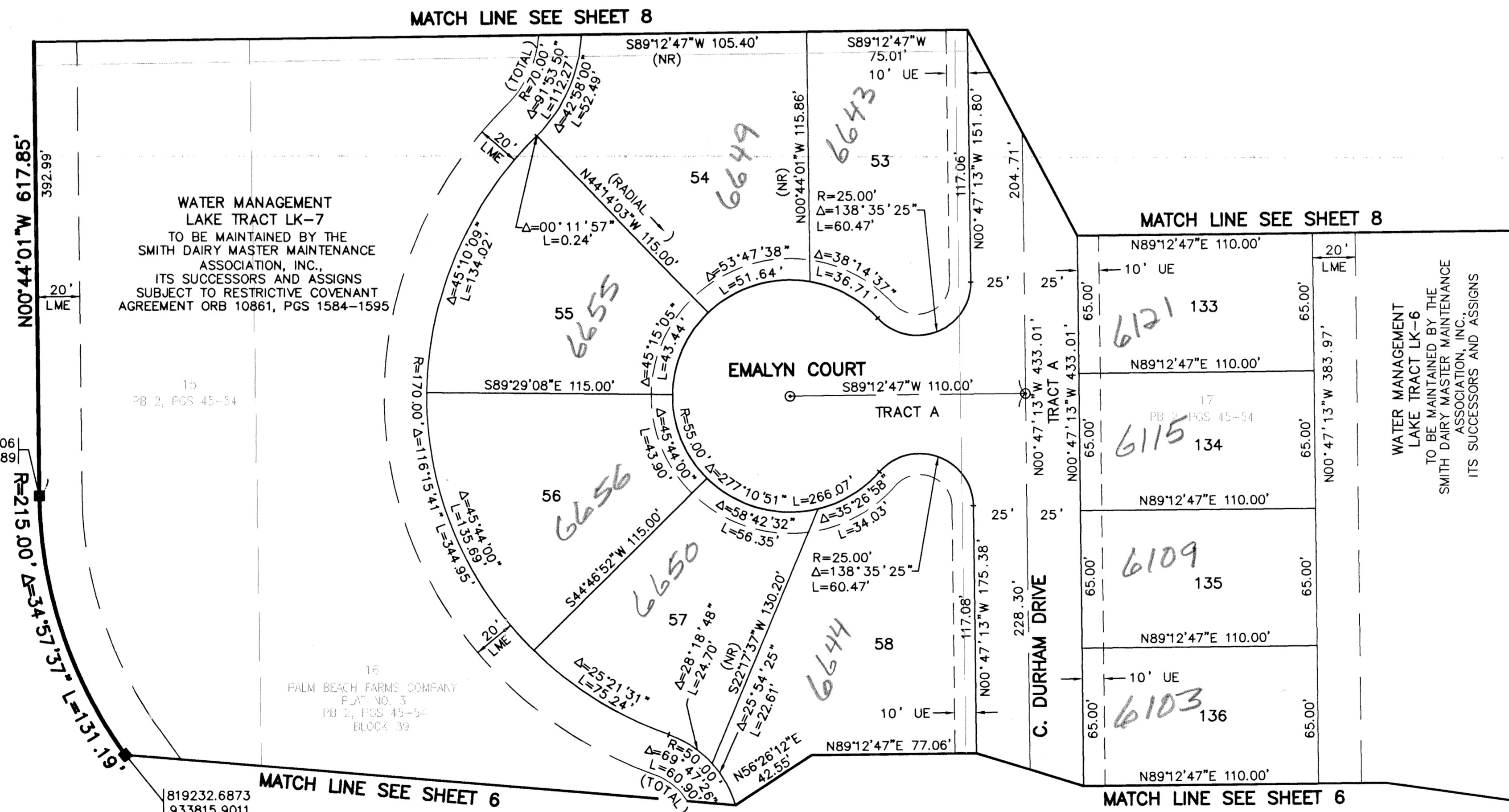
STATE OF FLORIDA  
 COUNTY OF PALM BEACH  
 THIS PLAT WAS FILED FOR  
 RECORD \_\_\_\_\_  
 THIS \_\_\_\_\_ DAY OF \_\_\_\_\_  
 AD, 1999 AND DULY RECORDED  
 IN PLAT BOOK \_\_\_\_\_ ON PAGES  
 \_\_\_\_\_ AND \_\_\_\_\_  
 DOROTHY H. WILKEN, CLERK  
 BY: \_\_\_\_\_, D.C.

CIRCUIT COURT SEAL

PLAT NO. 13  
 PALM BEACH FARMS COMPANY  
 PB 6, PGS 98-99

819355.3806  
 933775.5289

819232.6873  
 933815.9011



SHEET LOCATION MAP  
 (NOT TO SCALE)

- LEGEND**
- L ARC LENGTH
  - AE ACCESS EASEMENT
  - BE BUFFER EASEMENT
  - Δ CENTRAL (DELTA) ANGLE
  - CH CHORD
  - DE DRAINAGE EASEMENT
  - LAE LIMITED ACCESS EASEMENT
  - LME LAKE MAINTENANCE EASEMENT
  - LMAE LAKE MAINTENANCE ACCESS EASEMENT
  - PUD PLANNED UNIT OF DEVELOPMENT
  - (NR) NON-RADIAL
  - ORB OFFICIAL RECORD BOOK
  - PB PLAT BOOK
  - PG(S) PAGE(S)
  - R RADIUS
  - (TYP) TYPICAL
  - UE UTILITY EASEMENT
  - PERMANENT REFERENCE MONUMENT
  - SET LB-048
  - PERMANENT CONTROL POINT
  - SET LB-048
  - ⊕ CENTERLINE

Journeys End Plats  
 PAGE 58  
 FLOOD MAP # 1704  
 ZONING PUD 1/5E  
 QUAD # 34  
 SE 86-1061  
 TAZ 943  
 PUD NAME Smith Dairy East

THIS INSTRUMENT WAS PREPARED BY DAVID L. SMITH, P.S.M. IN THE OFFICES OF MOCK, ROOS & ASSOCIATES, INC., 5720 CORPORATE WAY, WEST PALM BEACH, FLORIDA 33407.

SHEET 7 OF 12

SCALE:	1" = 40'
P.A. NO.:	98082.53
DATE:	FEBRUARY 1999
DRAWING NO.:	45-42-03-68

**MOCK • ROOS**  
 ENGINEERS • SURVEYORS • PLANNERS

5720 Corporate Way, West Palm Beach, Florida 33407  
 (561) 683-3113, fax 478-7248

**JOURNEY'S END PLAT TWO**  
 PART OF SMITH DAIRY EAST P.U.D. BEING A PORTION OF SECTION 3, TOWNSHIP 45 SOUTH, RANGE 42 EAST, TOGETHER WITH A REPLAT OF A PORTION OF BLOCK 39, PALM BEACH FARMS COMPANY, PLAT NO. 3, PLAT BOOK 2, PAGES 45 THROUGH 54 SECTION 3, TOWNSHIP 45 SOUTH, RANGE 42 EAST PALM BEACH COUNTY, FLORIDA

K:\west\westsm-a\dwg\SM\_ARPO6.dwg 06/07/99 10:34:18 AM EDT

REV.: 4-23-99  
 CAD FILE:  
 WESTSM\_A/SM\_ARPO6